

Johann Sebastian Bach

Cantata

Was mein Gott will, das g'scheh' allzeit

BWV 111

DotMus Editions *scores which perform*

(supplied in .MUS format for Finale 2003 or later)

DotMus Editions are professionally typeset electronic full scores. Please note that these are electronic documents in .MUS format, which can be viewed, played, printed and arranged using Finale 2003 (or a later version). Individual instrumental parts can be printed separately, and the sound edited (depending on computer set up). You can also produce practice tracks and smart music accompaniments. If you do not have Finale installed on your computer, these scores can be accessed using the free-to-download Finale Reader.

For Baroque scores, you will also need the specially developed figured bass True-type font, Eisenach, which is supplied free in a 'lite' version with the purchase of a relevant DotMus publications. For the full version order "Eisenach: The Figured-bass Font for Finale".

Delivery is via email with email attachment(s). Printable versions of the scores can also be ordered in Adobe Reader (.pdf) format.

DotMus Electronic Editions are ideal for study, performance preparation, analysis, arranging, or purely for recital on your computer.

A series of contextual/analytical notes accompany the scores.

Available:

"Eisenach: The Figured Bass Font for Finale" (Figured-bass font in True-type format)

Bach, Cantata, "Wie schön leuchtet der Morgenstern", BWV 1.

Bach, Cantata, "Meine Seel' erhebt den Herrn", BWV 10.

Bach, Cantata, "Ihr werdet weinen und heulen", BWV 103.

Bach, Cantata, "Gottes Zeit ist die allerbeste Zeit", Actus Tragicus, BWV 106.

Bach, Cantata, "Was mein Gott will, das g'scheh allzeit", BWV 111.

Bach, Brandenburg Concerto No. 2 in F major.

Vivaldi, L'Estro Armonico Op. 3 Nos. 1-12: Twelve Concertos for one, two and four violins.

Website: DotMus.Webplus.Net

Email: atticbooks@ntlworld.com

DotMus scores, and a range of antiquarian and second-hand music books and scores, can also be found at *atticbooks*.

Was mein Gott will, das g'scheh' allzeit

BWV 111

J. S. Bach

1. Chor

Musical score for the first system of the chorale. It includes staves for Oboe I, Oboe II, Violino I, Violino II, Viola, Soprano, Alto, Tenore, Basso, and Continuo. The Continuo part includes figured bass notation: 6, 7, 6, 7, 4/2, 6/5, -, 3, -, 6/5, b7.

Musical score for the second system of the chorale. It includes staves for Ob. I, Ob. II, Vln I, Vln II, Vla, Sop., Alt., Ten., Basso, and B.c. The B.c. part includes figured bass notation: 3, 4/2, 6/5, -, 7, 6/4, 7.

9

Ob. I

Ob. II

Vln I

Vln II

Vla

Sop.

Alt.

Ten.

Basso

B.c.

3 6 - 7 6 6 7# 6 7 6 5 - 6 7# 5 3 - 6 7

13

Ob. I

Ob. II

Vln I

Vln II

Vla

Sop.

Alt.

Ten.

Basso

B.c.

5 - 6 7 5 - 6 7# 5 - 7# 4/2 6 6 6 5#

17

Ob. I

Ob. II

Vln I

Vln II

Vla

Sop.

Alt.

Ten.

Basso

B.c.

Was mein Gott will, das g'scheh' all - zeit, das g'scheh' all -

Was mein Gott will, das g'scheh' all - zeit, was mein Gott will, das g'scheh' all -

Was mein Gott will, das g'scheh' all - zeit, was mein Gott will, das g'scheh' all -

6 6 6 2 6 6 4 6

21

Ob. I

Ob. II

Vln I

Vln II

Vla

Sop.

Alt.

Ten.

Basso

B.c.

zeit,

zeit, was mein Gott will das g'scheh' all - zeit,

zeit, was mein Gott will das g'scheh' all - zeit,

zeit, was mein Gott will, das g'scheh' all - zeit,

zeit, was mein Gott will, das g'scheh' all - zeit,

5 - 7 5 - 5 7

Ob. I

Ob. II

Vln I

Vln II

Vla

Sop.

Alt.

Ten.

Basso

B.c.

5 - 6 7 # 5 6 7 # 5 # 6 # 5

sein Will' der ist der be
 sein Will' der ist der be - ste, sein Will, der ist der
 sein Will' der ist der be - - -
 sein Will der ist der

Ob. I

Ob. II

Vln I

Vln II

Vla

Sop.

Alt.

Ten.

Basso

B.c.

6 4 5 6 # 6 4 5 6 7 #

ste;
 be - - - - - ste, sein Will' der ist der be - - - - - ste;
 ste, sein Will' der ist der be - - - - - ste;
 be - - - - - ste, sein will der ist der be - - - - - ste;

33

Ob. I

Ob. II

Vln I

Vln II

Vla

Sop.

Alt.

Ten.

Basso

B.c.

6 7 4/2 6/5 5# 4/2 6/5 b7 4/2 6/5 -

37

Ob. I

Ob. II

Vln I

Vln II

Vla

Sop.

Alt.

Ten.

Basso

B.c.

7# 6/4 7# 6 7 6 -

41

Ob. I

Ob. II

Vln I

Vln II

Vla

Sop.

Alt.

Ten.

Basso

B.c.

7 # 6 7 6 5 - 6 7 # 5 4/2 6/5 7 5 4/2 6/5 7

45

Ob. I

Ob. II

Vln I

Vln II

Vla

Sop.

Alt.

Ten.

Basso

B.c.

zu

zu hel - fen

5 4/2 6/5 7 # - - - - # 5 4/2 6 6 6/4 5 #

49

Ob. I

Ob. II

Vln I

Vln II

Vla

Sop.
hel - fen den'n er ist be - - - reit,

Alt.
zu hel - fen den'n er ist be - reit, er ist be - reit, zu hel - fen

Ten.
den'n er ist be - reit, zu hel - fen den'n er ist be - reit, zu hel - fen -

Basso

B.c.
zu hel - fen den'n er ist be - reit, zu hel - fen

6 - - - 6 6 2 6 6/4 6 - - -

53

Ob. I

Ob. II

Vln I

Vln II

Vla

Sop.
die

Alt.
den'n er ist be - reit

Ten.
den'n er ist be - reit,

Basso

B.c.
den'n er ist be - reit,

4/2 5 7/5 5 6/4 5 7 5 4/2 6/5 7/5

Ob. I

Ob. II

Vln I

Vln II

Vla

Sop.
an ihn glau - - - - - ben

Alt.
die an ihn glau - ben fe - ste, die an ihn glau - - -

Ten.
die an ihn glau - - - - -

Basso
die an ihn glau - - - - -

B.c.
5 6 7 6 5 6 #

Ob. I

Ob. II

Vln I

Vln II

Vla

Sop.
fe - - - - - ste.

Alt.
ben fe - - - - - ste, die an ihn glau - ben fe - - - ste.

Ten.
ben fe - - - - - ste, die an ihn glau - ben fe - - - ste.

Basso
ben fe - - - - - ste, die an ihn glau - ben fe - - - ste.

B.c.
6 4 5 6 # 6 5

64

Ob. I

Ob. II

Vln I

Vln II

Vla

Sop.

Alt.

Ten.

Basso

B.c.

4/2 6 6 b5 6 7 # 6 7 #

69

Ob. I

Ob. II

Vln I

Vln II

Vla

Sop.

Alt.

Ten.

Basso

B.c.

5 4/2 6/5 7/5 b 5 4/2 6/5 b7 5 4/2 6/b 7 #

73

Ob. I

Ob. II

Vln I

Vln II

Vla

Sop.

Alt.

Ten.

Basso

B.c.

Er hilft aus Noth, aus Noth, aus Noth, der

6/4 5/4 7/4 7/4

77

Ob. I

Ob. II

Vln I

Vln II

Vla

Sop.

Alt.

Ten.

Basso

B.c.

der from - me Gott, Noth, er hilft aus Noth, der from - me Gott, er hilft aus Noth, der from - me Noth, der from - me

hilft aus Noth, aus Noth, der from - me Gott, er hilft aus Noth, der from - me

b6/4 b 6/4 6/5 7/4 5 b6/4

81

Ob. I

Ob. II

Vln I

Vln II

Vla

Sop.

Alt.

Ten.

Basso

B.c.

Gott,

Gott,

Gott,

5 6 7 6 7# 6 7 6 5 4/2 7/5 #7 5 4/2 6/5 7

85

Ob. I

Ob. II

Vln I

Vln II

Vla

Sop.

Alt.

Ten.

Basso

B.c.

5 4/2 6/5 7 5 4/2 6/5 7# # 4/2 6 6 6/4 5#

89

Ob. I

Ob. II

Vln I

Vln II

Vla

Sop.

Alt.

Ten.

Basso

B.c.

und züch - ti - get mit Maa - - -

und züch - ti - ge, mit Maa - - - ssen, und zü - ti -

und züch - ti - get mit Maa - - - ssen, und züch - ti - get mig Maa -

und züch - ti - get mit Maa -

6 5 6 6 6 7 6 # 6 6 3/4

93

Ob. I

Ob. II

Vln I

Vln II

Vla

Sop.

Alt.

Ten.

Basso

B.c.

ssen:

ge mit Maa - - - ssen:

ssen:

ssen:

ssen, mit Mass - - - ssen:

6 4 7 # 6 7 6 7 #

97

Ob. I

Ob. II

Vln I

Vln II

Vla

Sop.

Alt.

Ten.

Basso

B.c.

6 7 6 7 6 7 6 #5 4/2 6/5 7 # 5 4/2 6/5 7 #

101

Ob. I

Ob. II

Vln I

Vln II

Vla

Sop.

Alt.

Ten.

Basso

B.c.

5 4/2 6/5 7 5 4/2 6/5 7 # 5 7 # 4 - 6 6 4 5 #

Ob. I

Ob. II

Vln I

Vln II

Vla

Sop.

Alt.

Ten.

Basso

B.c.

Wer Gott ver - - - traut, fest auf ihn

Wer Gott ver - traut, fest auf ihn baut, fest auf ihn

Wer Gott ver - traut, fest auf ihn baut, wer Gott ver traut, fest auf ihn

Wer Gott ver - traut, fest auf ihn

6 6 6 6 6 $\frac{6}{4}$ $\frac{6}{2}$ 6 6

Ob. I

Ob. II

Vln I

Vln II

Vla

Sop.

Alt.

Ten.

Basso

B.c.

baut,

baut, wer Gott ver - traut, fest auf ihn baut,

baut, wer Gott ver - traut, fest auf ihn baut,

baut, wer Gott ver - traut, fest auf ihn baut,

6 $\frac{6}{4}$ 5 7 5 6 $\frac{6}{4}$ 5 7

113

Ob. I

Ob. II

Vln I

Vln II

Vla

Sop.

Alt.

Ten.

Basso

B.c.

den will er nicht ver - las - - - -

den will er nicht ver - las - sen, den will er nicht ver

den will er nicht ver - las - - -

den will er nicht ver -

5 6 6 7 5 5 6 7 6 5 6 # 5

4 2

117

Ob. I

Ob. II

Vln I

Vln II

Vla

Sop.

Alt.

Ten.

Basso

B.c.

sen.

las - - - - - sen, den will er nicht ver - las - - - sen.

sen, den will er nicht ver - las - - - sen.

las - - - - - sen, den will er nicht ver - las - - - sen.

6 4 5 6 5 6 5 6 4 3 6 7

5 # 4

121

Ob. I

Ob. II

Vln I

Vln II

Vla

Sop.

Alt.

Ten.

Basso

B.c.

6 7 4/2 6/5 - 3 - 6 7 3 4/2 6 -

125

Ob. I

Ob. II

Vln I

Vln II

Vla

Sop.

Alt.

Ten.

Basso

B.c.

7# 6/4 7# 3 6 - 7 6 6

Ob. I

Ob. II

Vln I

Vln II

Vla

Sop.

Alt.

Ten.

Basso

B.c.

7 - 6 7 6 5 - 6 7 5 - 6 7 5 - 6 7

Ob. I

Ob. II

Vln I

Vln II

Vla

Sop.

Alt.

Ten.

Basso

B.c.

5 - 6 7 5 - - 7 4 6 6 6 5

2. Arie

Basso

B.c.

5

Basso

B.c.

8

Basso

B.c.

11

Basso

B.c.

14

Basso

B.c.

17

Basso

B.c.

20

Basso

B.c.

23

Basso

B.c.

26

Basso

B.c.

Ent -
se - tze dich, mein Her - ze nicht, ent - se - tze dich, mein Her - ze, nicht, mein Her - ze, nicht, ent -
se - tze dich, mein Her - ze nicht, Gott ist dein Trost und
Zu - ver - sicht und dei - ner See - - - -
len Le - ben.
Ja, was sein wei - ser Rath be -
dacht ja, was sein wei - ser Rath be - dacht, ja, was sein wei - ser Rath be -
dacht, dem kann die Welt und Men - schen - Macht, die Welt und
Men - schen - Macht dem kann die Welt und Men - schen - Macht un - mög - lich

3. Recitativ.

Alt. 
 O Thö - rich-ter! der sich von Gott ent - zicht, und wie ein Jo - nas dort vor Got - tes

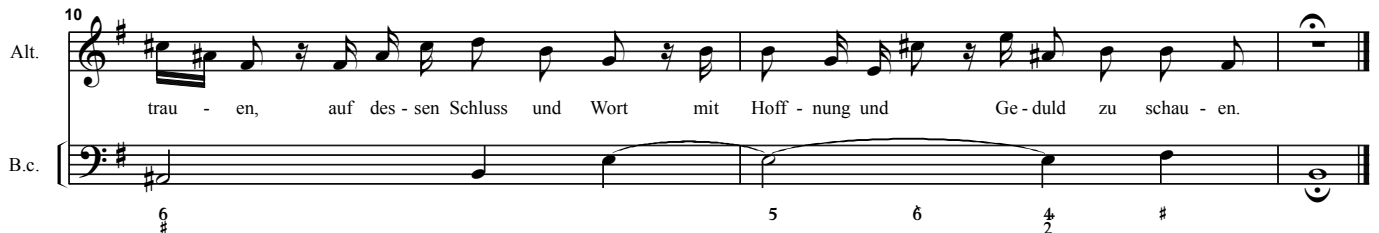
B.c.
 $\frac{8}{5}$ $\frac{7}{4}$ - $\frac{8}{5}$ - 6

Alt. 
 An - ge - sich - te flicht: auch un - ser Den - ken ist ihm of - fen - bar, und un - sers Haup - tes

B.c.
 - $\frac{6}{\#}$ - 5

Alt. 
 Haar hat er ge - zäh - let. Wohl dem, der die - sen Schutz er - wäh - let im gläu - bi-gen Ver

B.c.
 $\frac{6}{5}$ 6 $\frac{4}{2}$ 6 6

Alt. 
 trau - en, auf des - sen Schluss und Wort mit Hoff - nung und Ge - duld zu schau - en.

B.c.
 $\frac{6}{\#}$ 5 6 $\frac{4}{2}$ #

4. Aria Duett

Vln I
Vln II
Vla
Alt.
Ten.
B.c.

Vln I
Vln II
Vla
Alt.
Ten.
B.c.

Vln I
Vln II
Vla
Alt.
Ten.
B.c.

21

Vln I

Vln II

Vla

Alt.

Ten.

B.c.

So geh' ich mit be-herz-ten Schrit - ten, mit be-

7 6 8 6 5

27

Vln I

Vln II

Vla

Alt.

Ten.

B.c.

So geh' ich mit be-herz-ten Schrit - ten, mit be herz - - ten

herz - ten Schrit - ten, auch wenn mich Gott zum Gra-be führt, mich Gott zum Gra - - - be

6 5 7 5 6 6 7 6 5 6 5 7 4 2

32

Vln I

Vln II

Vla

Alt.

Ten.

B.c.

Schrit - ten, auch wenn mich Gott zum Gra-be führt, mich Gott zum Gra - - - be führt, auch

führt, so geh' ich mit be - herz - ten Schrit-ten, mit be - herz - - - ten Schrit - ten, so

2 6 6 5 6 6

37

Vln I

Vln II

Vla

Alt.

Ten.

B.c.

wenn mich Gott zum Gra - be, auch wenn mich Gott zum Gra - be führt, so geh' ich mit be - herz - ten

geh' ich mit be - herz - ten Schrit - ten, auch wenn mich Gott zum Gra - be führt, so geh' ich mit be - herz - ten

5 6# 6 7 5 6 5 7#

42

Vln I

Vln II

Vla

Alt.

Ten.

B.c.

Schrit - ten, auch wenn mich Gott zum Gra - be führt, so geh' ich mit be - herz - ten

Schrit - ten, auch wenn mich Gott zum Gra - be führt, so geh' ich mit be - herz - ten Schrit - ten, so

6 4 7 - 7# -

47

Vln I

Vln II

Vla

Alt.

Ten.

B.c.

Schrit - ten, so geh' ich mit be - herz - ten Schrit - ten, auch wenn mich Gott zum Gra - be

geh' ich mit be - herz - ten Schrit - ten, so geh' ich mit be - herz - ten Schrit - ten, mit be -

5 - 6 b7 -

51

Vln I

Vln II

Vla

Alt.

Ten.

B.c.

führt, zum Gra - be führt, So geh' ich mit be - herz - ten Schrit - ten, mit be -

8 herz - - - - ten Schrit - ten, auch wenn mich Gott zum Gra - be führt, mich Gott zum Gra -

Organ

2 $\frac{9}{7}$ $\frac{5}{5}$ 6 $\frac{4}{4}$ 5 $\frac{7}{5}$ 6 $\frac{4}{4}$ $\frac{7}{5}$

55

Vln I

Vln II

Vla

Alt.

Ten.

B.c.

herz - - - - ten Schrit - ten auch wenn mich Gott zum Gra - be führt, mich Gott zum Gra -

8 - - - - be führt, so geh' ich mit be - herz - ten Schrit - ten, mit be -

6 $\frac{4}{4}$ 5 3 $\frac{4}{2}$ 5 6 6

59

Vln I

Vln II

Vla

Alt.

Ten.

B.c.

- - - - be führt, auch wenn mich Gott zum Gra - - - - be führt, so

8 herz - - - - ten Schrit - ten, auch wenn mich Gott zum Gra - - - - be führt, auch

6 $\frac{4}{4}$ 7 $\frac{4}{2}$ 8 3 6 $\frac{4}{5}$

64

Vln I *tr*

Vln II

Vla

Alt.
geh' ich mit be-herz - ten Schrit - ten, auch wenn mich Gott zum Gra - be führt, so geh' ich

Ten.
8 wenn mich Gott zum Gra - be, auch wenn mich Gott zum Gra - be führt, so geh' ich

B.c.
9 5 6 4 6 5 7 6 4 5 3 7

68

Vln I

Vln II

Vla

Alt.
mit be - herz - ten Schrit - ten, auch wenn mich Gott zum Gra - be führt, so

Ten.
8 mit be - herz - ten Schrit - ten, auch wenn mich Gott zum Gra - be führt, so

B.c.
- 6 4 - 2 6 6 5

72

Vln I

Vln II

Vla

Alt.
geh' ich mit be-herz - ten Schrit - ten, auch wenn mich Gott zum Gra - be führt.

Ten.
8 geh' ich mit be-herz - ten Schrit - ten, auch wenn mich Gott zum Gra - be führt.

B.c.
6 2 6 6 5 5 6 5 3

77

Vln I

Vln II

Vla

Alt.

Ten.

B.c.

6 5 4 3 6 6 6 6 3 6 6 6 # 7

4 3 2 3 2 4 2 5 3 4 2 5 # 7

83

Vln I

Vln II

Vla

Alt.

Ten.

B.c.

6 7 6 5 4 3 2 1 6 7 6 5 4 3 2 1

6 7 6 5 4 3 2 1 6 7 6 5 4 3 2 1

89

Vln I

Vln II

Vla

Alt.

Ten.

B.c.

6 7 6 5 4 3 2 1 6 7 6 5 4 3 2 1

6 7 6 5 4 3 2 1 6 7 6 5 4 3 2 1

96

Vln I

Vln II

Vla

Alt.

Ten.

B.c.

Gott hat die Ta - ge auf - ge - schrie - - - - ben,

Gott hat die Ta - ge auf - ge -

6 4 7 6 6 6 6 6 6 ♯

101

Vln I

Vln II

Vla

Alt.

Ten.

B.c.

hat die Ta - ge auf - ge - schrie - - - - - ben, so wird, wenn sei - ne Hand mich

schrie - - - - - ben, so wird, wenn sei - ne Hand mich

6

105

Vln I

Vln II

Vla

Alt.

Ten.

B.c.

rührt, des To - des Bit - ter - keit, des To - des Bit - ter - keit ver - trie - ben.

rührt, des To - des Bit - ter - keit, des To - des Bit - ter - keit ver - trie - - - - ben.

7 7 7 6 4 5 # 6 -

110

Vln I

Vln II

Vla

Alt.

Ten.

B.c.

Gott hat die Ta - ge auf - ge -

Gott hat die Ta - ge auf - ge - schrie - - - - - ben,

6 6 6 4 6 6 # 6 6 #

116

Vln I

Vln II

Vla

Alt.

Ten.

B.c.

schrie - - - - - ben, so wird, wenn sei - ne Hand mich

hat die Ta - ge auf - ge - schrie - - - - - ben, so wird, wenn sei - ne Hand mich

5

120

Vln I

Vln II

Vla

Alt.

Ten.

B.c.

rührt, des To - des Bit - - - ter - keit, des To - des Bit - ter - keit ver - trie - - - - - ben.

rührt, des To - des Bit - - - ter - keit, des To - des Bit - ter - keit ver - trie - - - - - ben.

7 7 7 6 6 #

Da Capo

5. Recitativ.

Ob. I

Ob. II

Sop.

B.c.

Drum wenn der Tod zu-letzt den Geist noch mit Ge-walt aus sei-nem Kör-per reisst, so nimm ihn, Gott, in treu-e Va-ter-

6 b5 6 6 6_{b5}

Ob. I

Ob. II

Sop.

B.c.

hän - de; wenn Teu - fel, Tod und Sün - de mich be - kriegt, und mei - ne Ster - be - kis - sen ein

6 4/2 # 5 4/2

Ob. I

Ob. II

Sop.

B.c.

Adagio

Kampf-platz wer - den müs - sen, so hilf, da-mit in dir mein Glau - be siegt, O se - - - li -

- 6 6/5 #

Ob. I

Ob. II

Sop.

B.c.

ges, ge - wünsch - - - - - tes En - - - - - de!

4/2 6 5 #6/5 6/4 7#

6. Chorale

Ob. I
Ob. II
Vln I
Vln II
Vla
Sop.
Alt.
Ten.
Basso
B.c.

8

Noch eins, Herr, will ich bit - ten dich, du wirst mir's nicht ver - sa - - - - gen:
wann mich der bö - se Geist an - flicht, lass mich doch nicht ver - za - - - - gen!

6 4 3 6 6 5 6 # 5 4 #

Ob. I
Ob. II
Vln I
Vln II
Vla
Sop.
Alt.
Ten.
Basso
B.c.

8

Hilf, steur' und wehr', ach Gott, mein Herr, zu Eh - ren dei - nem Na - men. Wer
Hilf, steur' und wehr', ach Gott, mein Herr, zu Eh - ren dei - nem Na - men. Wer

6 6 6 # 4 5 6 5 # 6 7 6 #

12

Ob. I

Ob. II

Vln I

Vln II

Vla

Sop.

Alt.

Ten.

Basso

B.c.

das be - gehrt, dem wird's ge - währt; drauf sprech' ich fröh - lich: A - - - - men!

das be - gehrt, dem wird's ge - währt; drauf sprech' ich fröh - lich: A - - - - men!

8 das be - gehrt, dem wird's ge - währt; drauf sprech' ich fröh - lich: A - - - - men!

das be - gehrt, dem wird's ge - währt; drauf sprech' ich fröh - lich: A - - - - men!

6 5 3 6 6 5 6 # 5 #

Bach Cantata *Was mein Gott will das g'scheh allzeit*, BWV 111

Bach's Cantata, *Was mein Gott will das g'scheh allzeit*, BWV 111, forms part of the cantata cycle of 1724 to 1725. This series is known as the Chorale Cantata *Jahrgang* [annual cycle], because the text of each work is based on a Lutheran chorale (hymn), and the opening chorus of each work incorporates the tune of the chorale. The cycle was probably intended to celebrate the bicentenary of the first Lutheran chorale tunes, published in 1524. The chorales were an immense source of inspiration to Bach – one of his first major cyclical projects had been *Das Orgelbüchlein*, a sequence of chorale preludes for organ corresponding to each Sunday and feastday throughout the ecclesiastical year. Neither *Das Orgelbüchlein* nor the Chorale Cantata *Jahrgang* was fully completed; Bach ceased composing chorale cantatas abruptly at Easter 1725, about two-thirds of the way through the cycle, though, in later years, he added further cantatas to the series.

The texts and melodies of the Lutheran hymns often originated independently, indeed, several of the tunes predate the Reformation; some were derived from secular tunes, others were adapted from Gregorian plainsong, and, in distant origin, these might even be traced further back to early Judaic chant. The text of the hymn *Was mein Gott will* was written in 1547 by Duke Albrecht of Brandenburg. Its associated tune, by the French cleric Claudin de Sermisy, had already been published in c. 1530, and was originally intended for a secular text (*Il me souffit de tous mes maux*). As Whittaker points out, the tune presented Bach with some compositional challenges, especially in its somewhat repetitive cadence structure, stepwise contour, and, most obviously, modal outline.¹ Nevertheless, the tune was clearly popular, and Bach left some half-dozen different harmonisations.²

Bach's Chorale Cantata cycle can perhaps be considered the greatest outpouring of mankind's musical creativity; the incredible succession of masterpieces is strikingly illustrated by the sequence for early 1725, which, in addition to works for the four Sunday services, included cantatas for New-year's day and the Feast of the Epiphany (the visit of the three wise men – celebrated on 6th January). *Was mein Gott will, das g'scheh allzeit*, designated for the third Sunday after Epiphany, was first performed on 25th January 1725. The unknown cantata librettist had retained, without modification, the first and last of the four hymn verses for the outer (choral) movements. The second and third verses of the hymn were re-written to provide the text for the four inner movements (aria – recit. – duet – recit.). Although the text of the hymn is not itself directly related to the bible readings for the day,³ in paraphrasing the hymn, the librettist has forged some implicit connections.

¹ W. Gillies Whittaker, *The Cantatas of Johann Sebastian Bach*, London: OUP, 1959, pp 402–407. Whittaker wrote the first comprehensive survey of Bach's cantatas in English; his comments are well worth studying, although it is advisable to be highly circumspect regarding the historical context: the dates of the cantatas suggested by Whittaker are now considered quite inaccurate.

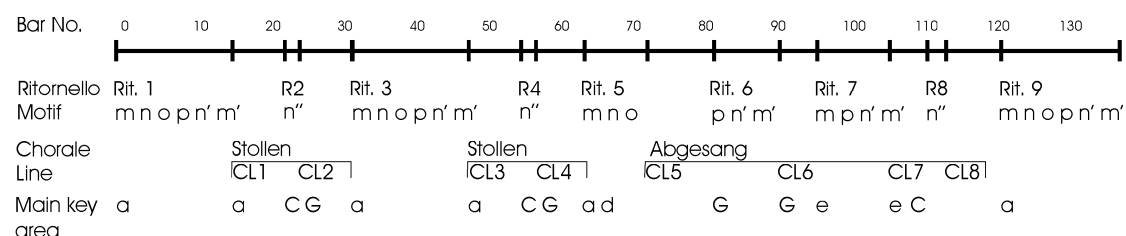
² The tune was also sung with the text, *Ich hab in Gottes Herz und Sinn*. In C. S. Terry, *The Four-part Chorals of J. S. Bach*, these are nos. 357–363 (no. 358 is from the cantata being discussed); Terry provides the original text for the hymn with nos. 357–8. In the Riemenschneider edition, the harmonisations are nos. 41, 115, 120, 265 and 349.

³ Romans ch.12, vv 17–21, and Matthew ch. 8 vv 1–13.

The powerful opening chorus – scored for two oboes, strings, continuo and four-part choir⁴ – melds three distinct formal principles: *ritornello* construction, derived from the high-baroque concerto, *cantus firmus* technique, more usually associated with mass and motet settings from the Renaissance, and *Barform*, the characteristic shape of the chorale tune. Bach studied ritornello form in the music of his Italian contemporaries – especially Vivaldi; he arranged several of Vivaldi’s concertos from *L’Estro Armonico*, Op. 3, for keyboard. Characteristically, in a baroque concerto, there is a distinctive textural contrast between the ritornello theme played by the full ensemble (*tutti*) and the solo episodes, which are usually more lightly scored. Conceptually, in the chorale cantata, this has been replaced by a tonal contrast between the instrumental ritornello passages and the accompanied chorale phrases, sung as a *cantus firmus* in the soprano. The chorale tune itself is cast in Barform: the first two melodic lines⁵, known as the *Stollen*, are repeated; the remaining four lines form the *Abgesang*. This AAB structure is reflected in the overall shape of the opening chorus: bars 1–32 are repeated as bars 32–63; bars 64–136 include the *Abgesang*. An overview of the structure is shown in Example 1.

Example 1. Diagram of Structure of Opening Chorus.

(Rit. 1, R2 = Ritornello 1, Ritornello 2; m, n, o, p = motifs from ritornello theme; CL1 = Chorale Line 1; a = a minor; C = C major.)



The forceful thematic material of the ritornello is treated with great economy throughout the movement, reflecting both the intensity of Bach’s compositional process and the severe time constraints under which he was working – the cantata was probably composed, copied, rehearsed and performed within the space of a week. The surviving holographic manuscript bears witness to this frenetic creativity, with its apparently rapid handwriting and frequent corrections.⁶ The reiterated tonic-dominant block chords of the opening bars emphatically announce the tonic key (shown as motif m in Example 1). The bass of bars 3–6 outlines A – G – F – E, a descending melodic-minor pattern (n) which anticipates the modality of the chorale tune (the second note of which is G). A dominant pedal in the bass (o, b. 7–8) is followed by a sequence of quite strident suspensions (p, b. 9–10); the descending bass phrase recurs as n’ in b. 11–14 (now E – D – C – B) and the tonic-dominant chording in bars 15-16 (m’).

The ritornello theme recurs throughout the movement, variously truncated and transposed, then in full again at the end. Alternating with the ritornello, the hymn tune appears in long notes (minims and semibreves) in the soprano part as a *cantus firmus*. Against this hymn tune, the lower voices sing imitative phrases, in shorter

⁴ Bach’s chorus may have comprised four solo voices; the upper string parts were doubled (as the existence of additional copied parts indicates).

⁵ In a chorale tune, the end of each melodic line is traditionally demarcated with a pause (fermata) sign.

⁶ J. S. Bach *Neue Bach-Ausgabe* Series I/6 page VIII [facsimile of first page of score].

note values, while the upper strings play a running counterpoint in semiquavers. The alternating pattern of ritornello followed by imitatively treated chorale line continues through the movement, though the fifth line of the chorale (b. 74—81) is harmonised more homophonically. The overall tonal scheme of the movement reflects the cadence pattern of the chorale, and suggests the broad scheme shown in Example 1.

The bass aria is accompanied only by the continuo line, which underpins the declamatory solo line with a type of insistent, but freely varied ostinato pattern. The cantata librettist has invented the underlying idea for this aria: ‘do not be fearful, my heart’; perhaps the palpitations of the ‘fearful heart’ – missing some beats – prompted Bach to create the unsettled musical motifs: the agitated theme is interspersed with rests (thus ‘missing’ the first beat of bar 2) and the opening sequence rather disconcertingly forms an asymmetric five-beat pattern, which is dovetailed into increasingly foreshortened fragments (Ex. 2).

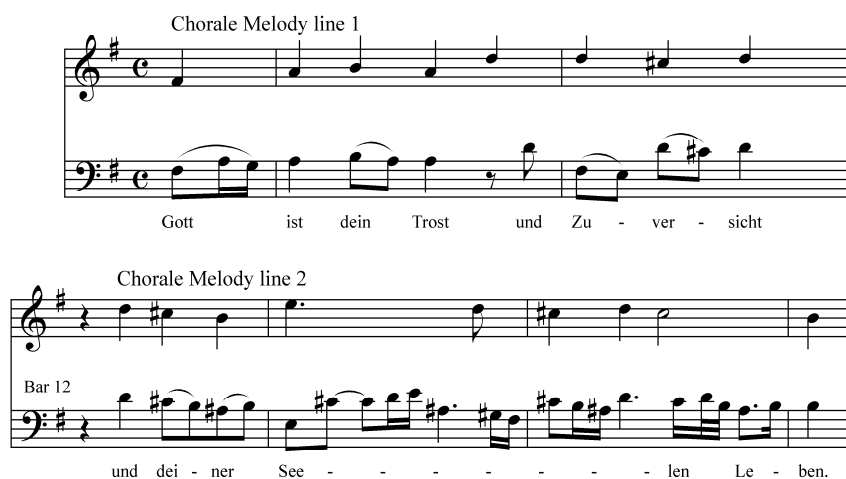
Example 2. Bach, Bass Aria, “Entsetze dich, mein Herze, nicht”, BWV 111/ii



The next line of aria text (‘Gott ist dein Trost und Zuversicht’) [God is your Comfort and Security] has been adapted directly from the opening line of the second verse of the hymn (‘God is my Comfort, God is my Security’); Bach, in turn, has set this to a variation of the opening of the hymn tune. Similarly, the second line of the tune can just be discerned in the subsequent and more extended melisma (bb. 12—14, Ex. 3).

Example 3. Bach, Bass Aria “Entsetze dich, mein Herze, nicht”, BWV 111/ii (melody shown with chorale tune for comparison).

Chorale Melody line 1



Gott ist dein Trost und Zu - ver - sicht

Chorale Melody line 2

Bar 12

und dei - ner See - - - - - len Le - ben.

The image shows two systems of musical notation for a chorale melody. The first system, labeled 'Chorale Melody line 1', consists of two staves (treble and bass clef) with the lyrics 'Gott ist dein Trost und Zu - ver - sicht' underneath. The second system, labeled 'Chorale Melody line 2', also consists of two staves with the lyrics 'und dei - ner See - - - - - len Le - ben.' underneath. The notation includes various note values and rests, with some notes marked with sharps.

The overall design of this aria – a modified da capo construction – is largely text-determined. The central section (bb. 18—37) is built over the same continuo motifs as the opening section. The soloist sings particularly chromatic and angular melismas to illustrate the ‘Unmöglich widerstreben’ [‘impossible counter-struggle’] inspired by the hymn text (bb. 29—35). Such strikingly original melodic lines present a serious technical and interpretative challenge to the singer. The opening section is then

partially repeated: bb. 41—45 correspond with 4—9, more or less exactly, while the subsequent section has been transposed (variously up a fourth or down a fifth) to finish on the tonic rather than the dominant.

The alto recitative paraphrases the remainder of the second verse of the hymn. The fourth movement, an extended duet for alto and tenor, in some ways represents the heart of the work, and is remarkable in many respects, notably for the change of mood (now in G major) and for its impassioned virtuosity. The jaunty skipping of the melody represents the ‘courageous steps’ which lead even to the grave. In Lutheran orthodoxy death was considered life’s goal, as expounded in the fifth movement, an accompanied recitative for soprano. In common with many of Bach’s works exploring this theme, the overall emotion of the alto-tenor duet is radiantly life-affirming, although there are some notable chromaticisms on ‘Grabe’ (grave) and dominant minor-ninth chords on ‘Todes Bitterkeit’ (death’s bitterness). Elsewhere, Bach sometimes renders every nuance of the text in musical imagery, though whether the surging arpeggios in the first violin (bb. 8—11) and the subsequent figuration alternating around an open D-string pedal note convey specific meanings must remain conjectural.⁷

In common with most of Bach’s cantatas, the final movement is a straightforward chorale setting in four-part harmony, the voices being doubled by the instruments throughout.

⁷ Klaus Hoffman, in booklet liner notes to Masaaki Suzuki’s Cantata recordings Vol. 32 (BIS—SACD 1501) p. 6, suggests that the latter motif may relate to the text from the central section ‘Gott hat die Tage aufgeschrieben’ [‘God has numbered the days’], but this motif does not actually occur simultaneously with that text, so its origin is perhaps less specific.